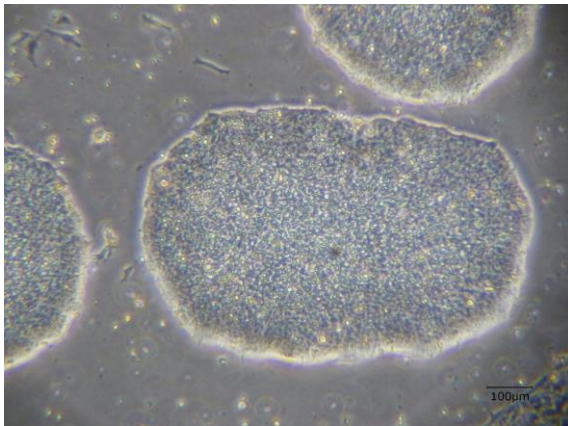
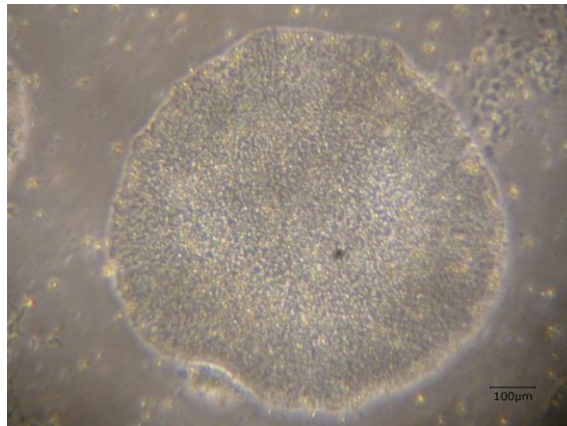


【 CiRA-j-1266 】 Morphology of iPSC colonies

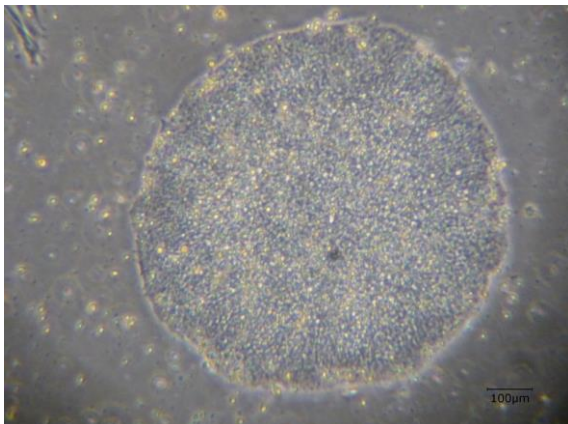
CiRA-j-1266-A: passage-3



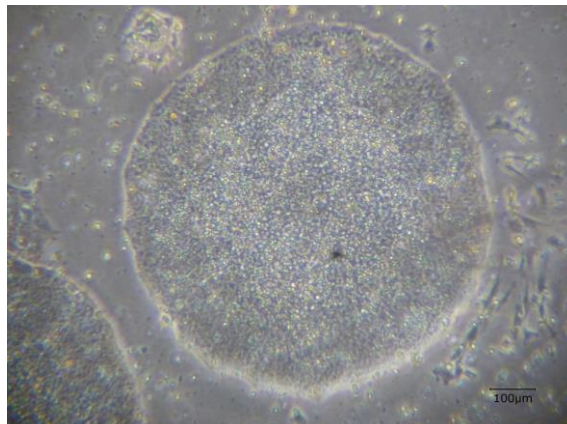
CiRA-j-1266-B: passage-3



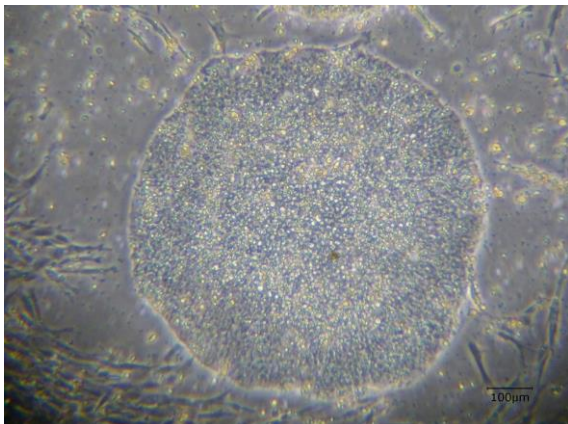
CiRA-j-1266-C: passage-3



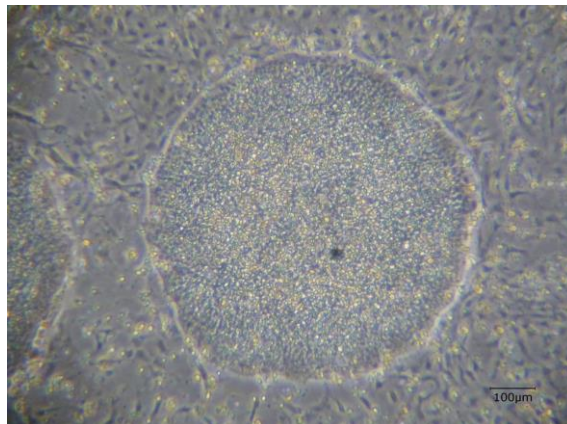
CiRA-j-1266-D: passage-3



CiRA-j-1266-E: passage-3



CiRA-j-1266-F: passage-3



(All images were captured at 4x magnification)